

WATER DAMAGE

There's no substitute for Advanced Equipment. Since 1989, Western Montana area property owners, building managers, and insurance adjusters have relied in Dayspring Restoration for efficient 24-hour response to fire and water damaged residential, commercial and industrial structures and contents.

Water damage and Restorative Drying services offered:

- ☀️ 24 hour emergency water extraction with powerful truck mounted systems
- ☀️ Applied structural drying enables carpet and pad to be dried in place
- ☀️ Contents removal and offsite drying available
- ☀️ Wall cavity drying
- ☀️ Non-intrusive and intrusive testing for moisture and humidity
- ☀️ Refrigerant and desiccant dehumidification
- ☀️ Injectidry wall cavity drying
- ☀️ Hardwood floor drying and restoration
- ☀️ Sewage mitigation and sanitization
- ☀️ Mold remediation using state of the art technology and certified personnel
- ☀️ Infrared thermography for moisture surveys



Hidden and trapped moisture can lead to mold problems. Mold can grow and thrive in many materials that are used in our homes and businesses. Just add water and the ingredients for serious problems can exist. Dayspring's team of experts have the specialized knowledge, as well as the proper tools and instrumentation to find water wherever it may hide. Uncontrolled amounts of water in any form may cause warping, swelling, cracking and deterioration. Dayspring Restoration understands the damage water can do and responds quickly and efficiently, providing 24 hour, 7 day a week emergency service for water extraction and drying.

Dayspring maintains a significant inventory of air movers, as well as desiccant and refrigeration dehumidification equipment for use by our experts in this specialized field. We provide moisture evaluation and testing to ensure effective and complete drying. As a result, our clients are guaranteed a thorough and effective cleanup, remediation and restoration.



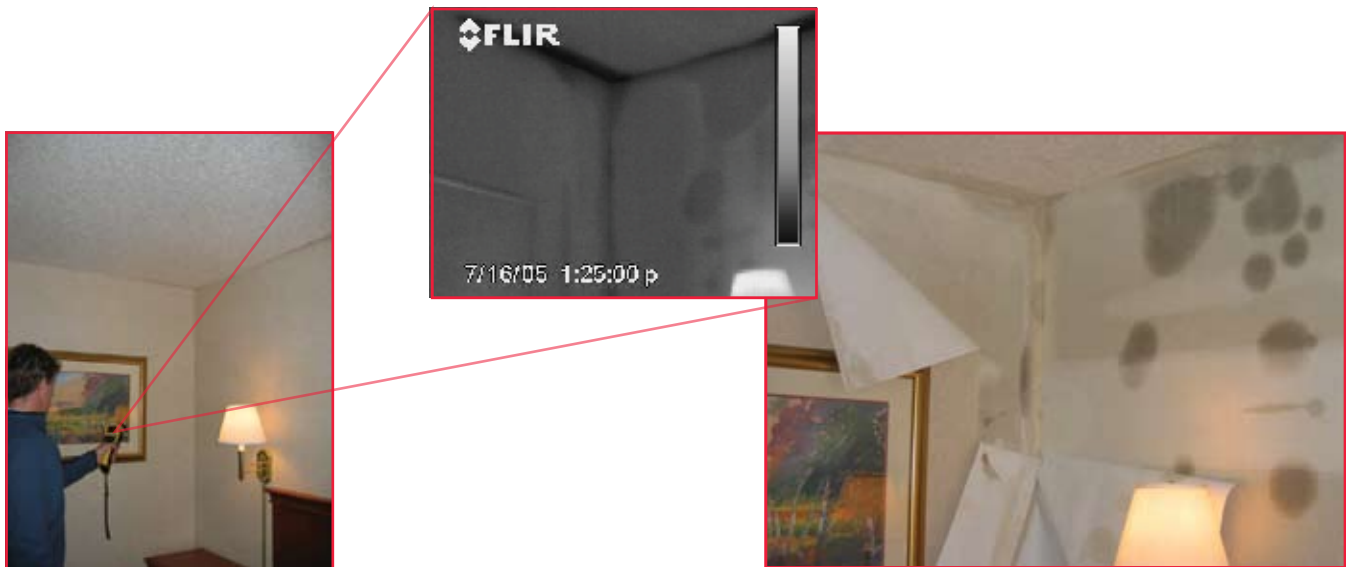
1-800-555-3803 24 hours-a-day, 7 days-a-week

WATER DAMAGE

Industry leaders of trained professionals.

Infrared Technology

Currently, building moisture surveys are performed using moisture-detecting equipment other than infrared imaging. These include non-destructive and penetrating moisture meters. Both of these moisture meters require direct contact with the building material surface. This needs considerable time to "scan" all surfaces of the building being surveyed. Because contact is required, hard to reach locations limit the effective use of moisture meter instruments. In contrast, an IR camera detects moisture by imaging the different temperatures of wet versus dry building materials. With the infrared camera a simple point and shoot can locate probable wet conditions of building material surfaces and potential areas of mold and microbial growth. In addition, the images provided by the camera can be used to visually document the condition of the building being surveyed, and are useful for inclusion in the survey report. The IR camera allows for nondestructive detection of water entry, quick survey of an area, automatic visual documentation and images that can reveal potential threats to property and life.



Desiccant Technique

The Air Qwest Systems product is comprised of large-capacity desiccant dehumidifiers to remove ambient water vapor from air. Large-capacity desiccant dehumidification units are used in a variety of industries, including water damage and remediation, document drying, industrial surface preparation for coating, mold and fungus prevention, long-term lay up of industrial condensation prevention. We have the capability to incorporate many additions to provide complete solutions for the temporary humidity control market.

When building materials come in contact with water due to piping failures, flooding or storms, losses can be contained by quickly drying out the structure. Desiccant dehumidifiers are used to quickly provide a low-dewpoint air stream to facilitate restoration of the structure. The low dewpoint acts as a sponge to pull moisture from building materials.

